



**WELCOME TO YOUR TUCKTEC FOLDING KAYAK
HERE ARE A FEW TIPS TO KEEP IN MIND BEFORE YOU START.**

- **WATCH THE ASSEMBLY VIDEO AT TUCKTEC.COM**
- **WATCH IT AGAIN**
- **LEARN THE “OPEN” AND “CLOSED” POSITION OF THE CLAMPS**
- **WARM WEATHER AND A SUNNY DAY WILL HELP MAKE SETTING UP FOR THE FIRST TIME EASIER AS THE PLASTIC HULL SHEET WILL BE MORE FLEXIBLE. IT IS RECOMMENDED TO ASSEMBLE FOR THE FIRST TIME AT 70 DEGREES OR WARMER**
- **WHEN ATTEMPTING THE SIDE CLAMPS FOR THE FIRST FEW TIMES KEEP IN MIND THAT IT’S NOT SO MUCH A MATTER OF STRENGTH, BUT A MATTER OF LEARNING HOW IT “WANTS” TO FOLD TO GET THE CLAMPS AND CATCH TO “MEET”.**

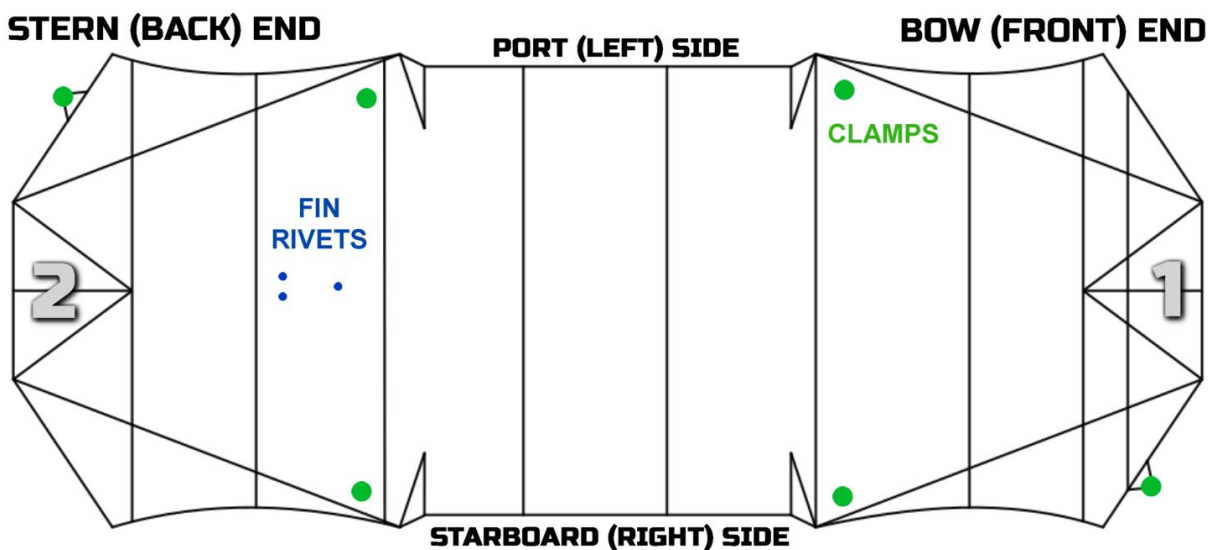
THOUGH IT MAY SEEM AWKWARD AT FIRST, ONCE YOU GET THE HANG OF HOW THE KAYAK WANTS TO FOLD, THE BEST POSITIONS TO ASSEMBLE FROM, AND YOU BEGIN TO WEAR IN THE FOLDS, ASSEMBLY WILL GET VERY QUICK AND EASY.

**REGISTER YOUR KAYAK HIN NUMBER AT
www.Tucktec.com
TO ACTIVATE YOUR WARRANTY**



1) Begin by removing the shoulder strap and velcro securing strap (these will be used later to shape and support the seat), and roll out the Hull sheet with the grooves facing up. Note the FRONT and BACK ends of the Kayak for proper order of steps.

DIAGRAM WITH FOLD LINES FACING UP



2) Begin at the BOW END (1) by pushing the center "V" flap in towards the body of the canoe.



3) From the RIGHT side of the sheet (with the clamp in the open position) bring the clamp end flap up and over while pulling-in the opposite end flap (using your body as a brace) and latch the clamp onto the “catch” located part way down the bow side. Secure and close clamp.



4) Repeat process on the STERN end point (2).

5) Next step is to secure the first side clamp to provide structural stability and shape to the Kayak. Start at the BOW end FROM the RIGHT side to secure the LEFT side clamp first. This is done by reaching over from the opposite side of the canoe that is to be secured and pulling over and down on the side handle towards you to create a fold in the area to be secured.

Pull the side handle IN and DOWN while pushing IN and DOWN on the OPEN CLAMP until they meet. Keep in mind you are not trying to pull the clamp to the catch, you are folding them to meet.

Hook on to the catch and close the clamp.



6) Move to the LEFT side of the Kayak to repeat the process with the clamp on the RIGHT side. Reaching across and pulling the handle in and down while holding the clamp in the open position and pushing in and down until they meet to catch. Close clamp.



7) Move to the STERN side clamps and repeat the process. First one side then the other. The stern end will have swiveling clamps. This will ensure the canoe will fold in properly. Pull the handle towards you and down the same way you do with the bow end, while holding the clamps in the open position as well as swiveling them to align with the catch.



Repeat on other side.

8) Next install the foam side rails by sliding the foam over the side of the hull sheet into the groove that runs along the bottom of the foam rail. Be sure the two side slots on the foam rail are facing OUT. And the handle is on the outside of the Kayak.



Once the foam rail is pushed fully down over the side pull the handle up with the paracord going through the grooves until the handle sits on top of the foam rail.



Repeat on the other side.

NOTE: EACH CLAMP HAS A "HASP". IF YOU'D LIKE TO LOCK THE CLAMPS IN POSITION SO THAT THEY CAN NOT "UN-LATCH" YOU CAN GET SOME COTTER PINS FROM A HARDWARE STORE AND CLIP INTO THE HASP.

**Congratulations! With a bit of practice you can get that down to 2 minutes!
Next... seat assembly.**

1) The next step is folding and installing the seat. Lay the velcro strap down, soft side down, take the seat and lay it down on the velcro strap with the cutouts facing up. The velcro strap will be positioned under the panel just before the seat back portion as shown.



Starting at the end with the small panel start folding the seat foam as shown. Fold again until you reach the back support panel. Use the velcro cinch strap to secure the folds together.



2) Place the back support strap (shoulder strap) to the back of the seat securing with the velcro strips attached to the back of the seat back.



3) Place the seat in the Kayak facing toward the front. Use the clips on the strap secure the seat to the paracord on the back end of the handles.



You can adjust the seat by sliding it back and forth to find your own comfort zone and back support. You should sit in it a few times while on the ground to get used to adjusting it, and finding the position that works best for you.

NOTE: You can use the seat foam flat as cushion to kneel on without attaching the back support strap. You can also leave it unfolded and still use the back support if you do not want a raised seat.

NEXT... The snap-up Tracking Fin.

1) To set up the Tracking fin just flip it up to the standing position until it snaps into place between the positioning tabs.



2) To fold back down for storage, lift the tab on the left side at the bottom of the fin so that the fin will fold back down underneath the positioning tabs.



NOTES: Try to wait until you are ready to place the Kayak in the water before setting up the fin. Place the back end of the Kayak into the water with enough depth so that the fin does not hit bottom. If the fin does hit bottom or get bent out of position, it should ease back on its own. The plastic is flexible so you can always bend back into shape and lift the positioning tabs to hold better.

